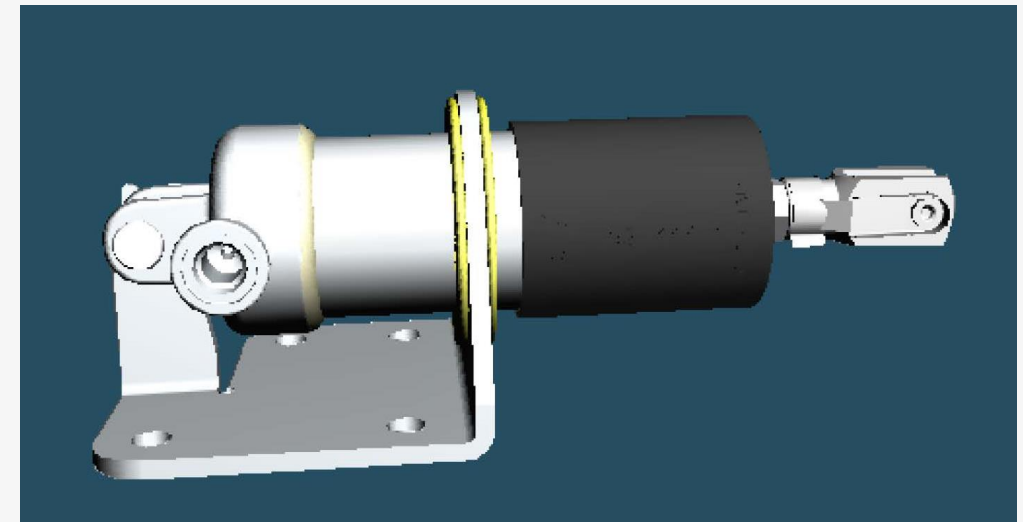
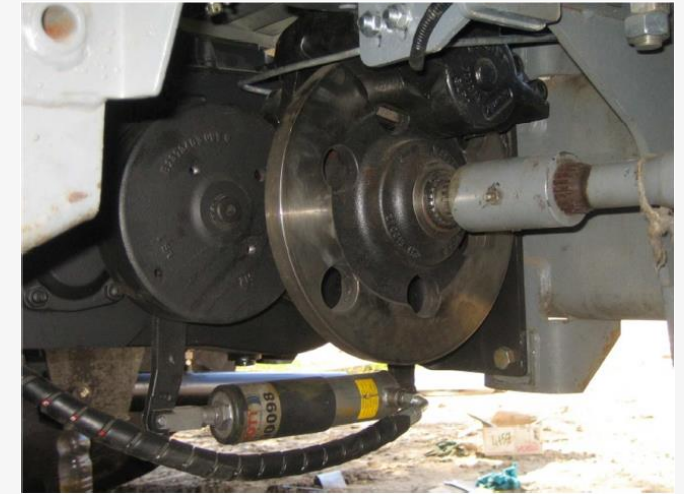


EXAMPLES OF ACTUATION DEVICES - 1

Hydr. Low-Pressure Spring applied Brake-Cylinder

- Pressure lower than **20 bar** for the actuation of the parking-brake's lever
- Different sizes for **different Range of Force and Stroke**
- **Suitable for different brakes' type** :
 - Cam Brakes
 - Mechanical Sliding Calipers
 - Hydr.-Mech. Sliding Calipers
- **Easy Assembly** in different positions:
 - Directly at the brake's lever
 - Somewhere else with a fixing-plate and a bowden-cable



EXAMPLES OF ACTUATION DEVICES - 2



Cables with different diameters :

- Ø2,5
- Ø3,5
- Ø5
- Ø6
- Ø8

Black : standard steel

Blue : stainless steel

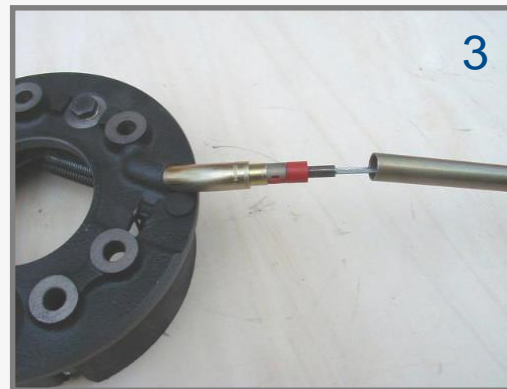
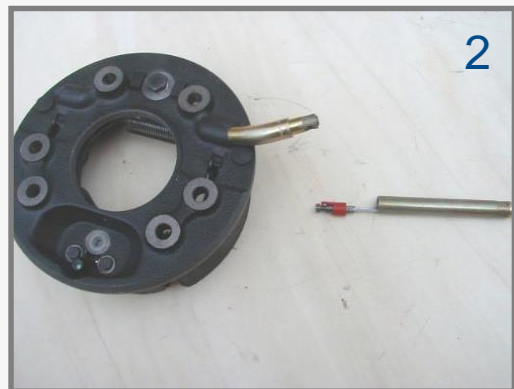
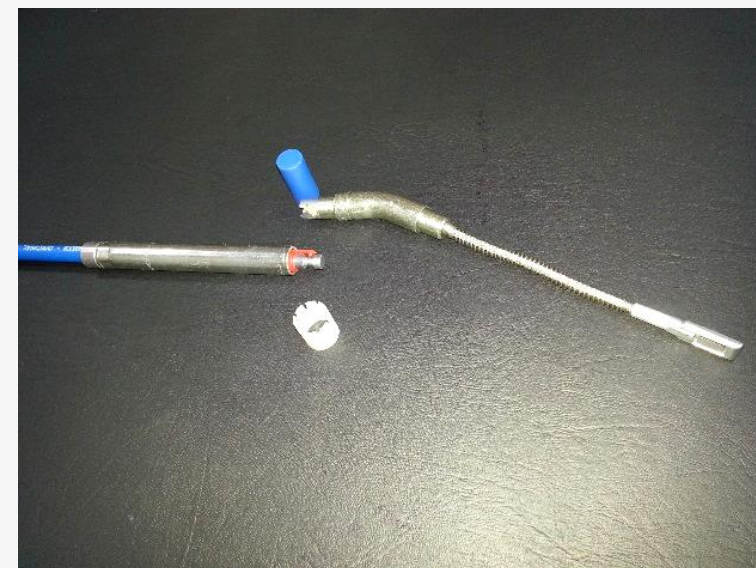
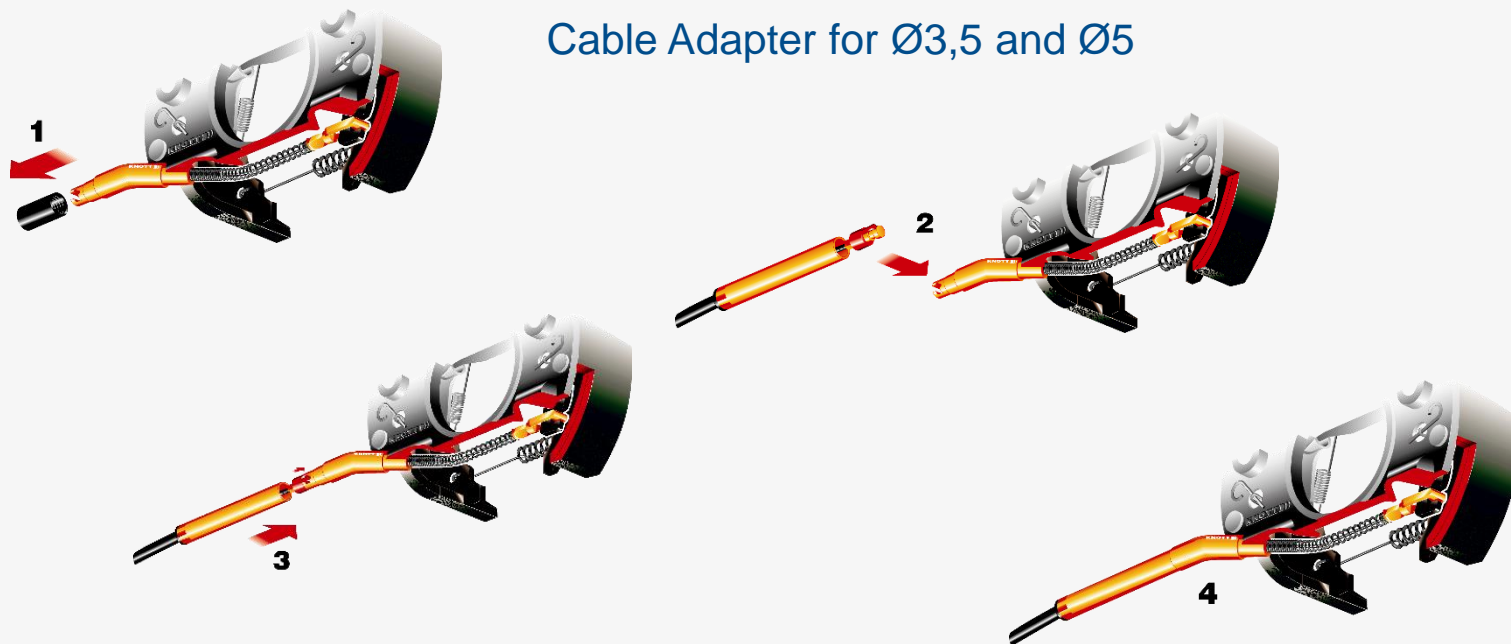
Red : reinforced

Cable-Ends



EXAMPLES OF ACTUATION DEVICES - 3

Cable Adapter for Ø3,5 and Ø5



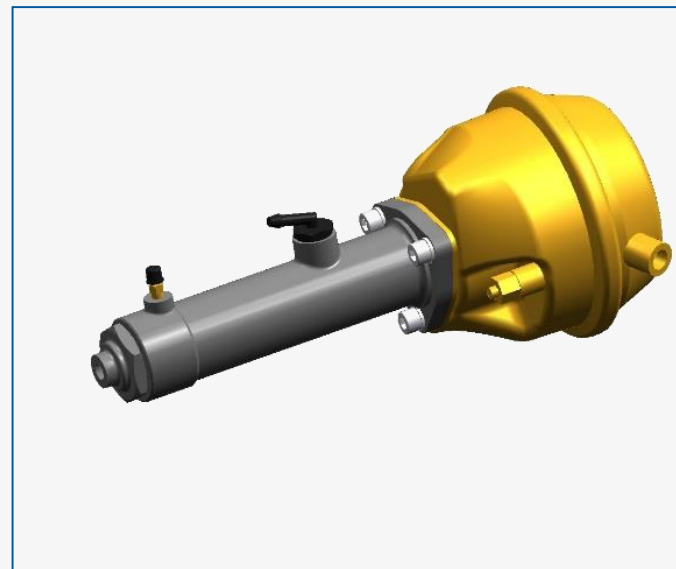
EXAMPLES OF ACTUATION DEVICES - 4



Wheel Cylinder



Master Cylinder



Air over hydraulic



Hand brake lever

EXAMPLES OF ACTUATION DEVICES - 5

**FOR
WET MULTI DISC
BRAKES**



Hydraulic actuator



Mechanical actuator



Pneumatic actuator